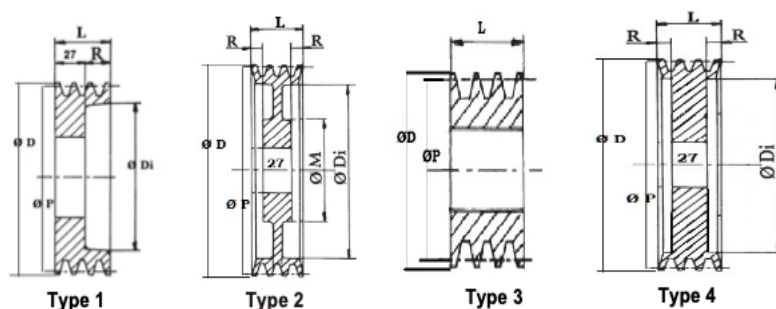


## PULEGGE PER CALETTATORE PULLEY FOR LOCKING DEVICE



### SPA/1

Type	Type	Lock bore	ØP	ØD	Di	Dm	L	R
SPA 125-	3	65	125	130.5	65	/	20	/
SPA 160-	3	55	160	165.5	55	/	20	/
SPA 180-	2	55	180	185.5	146	100	20	0

### SPA/2

Type	Type	Lock bore	ØP	ØD	Di	Dm	L	R
SPA 90-02	1	55	90	95.5	63	/	35	7,5
SPA 112-	1	55	112	117,5	77	/	35	8
SPA 112-	1	65	112	117.6	78	/	35	8
SPA 118-	4	55	118	123.5	83	/	35	7
SPA 125-	1	65	125	130,5	91	/	35	8
SPA 125-	3	47	125	130.5	47	/	35	/
SPA 140-	1	65	140	145.5	106	/	35	8
SPA 150-	1	65	150	155,5	116	/	35	8
SPA 150-	1	47	150	155.5	116	/	36	8
SPA 160-	1	65	160	165.5	126	/	35	8
SPA 170-	4	65	170	175.5	136	/	35	4
SPA 170-	4	55	170	175,5	136	/	35	4
SPA 180-	2	50	180	185.5	145	110	35	4
SPA 200-	2	65	200	205.5	167	120	35	4

### SPA/3

Type	Type	Lock bore	ØP	ØD	Di	Dm	L	R
SPA 90-03	1	55	90	95.5	65	/	50	22
SPA 100-	1	55	100	106	65	/	50	23
SPA 100-	3	65	100	105.5	65	/	50	0
SPA 112-	4	65	112	117.5	72	/	50	11,5
SPA 118-	4	65	118	123.5	84	/	50	11,5
SPA 125-	1	65	125	130.5	96	/	50	23
SPA 130-	1	65	132	135.5	96	/	50	23
SPA 140-	4	65	140	145.5	106	/	50	11,5
SPA 150-	1	65	150	155.5	116	/	50	23
SPA 160-	2	65	160	165.5	125	110	50	11,5
SPA 170-	4	55	170	175.5	136	110	50	11,5
SPA 170-	1	65	170	175.5	137	/	50	11
SPA 180-	2	50	180	185.4	145	110	50	11,5
SPA 180-	4	80	180	185,5	147	/	50	11,5
SPA 180-	2	80	180	185,5	145	110	50	11,5
SPA 200-	2	65	200	205.5	165	120	50	11,5

## SPA/4

Type	Type	Lock bore	ØP	ØD	Di	Dm	L	R
SPA 100-	3	65	100	105.5	65	/	65	/
SPA 112-	4	65	112	117.5	78	/	65	19
SPA 118-	4	65	118	123.5	82	/	65	19
SPA 125-	1	65	125	130.5	91	/	65	37
SPA 150-	1	65	150	155.5	115	/	65	38
SPA 160-	4	65	160	165.5	126	/	65	19
SPA 200-	2	65	200	205.5	166	120	65	18,5

## SPB/2

Type	Type	Lock bore	ØP	ØD	Di	Dm	L	R
SPB 125-	1	65	125	132	82	/	44	17
SPB 130-	4	80	130	137	85	/	44	8,5
SPB 140-	1	80	140	147	97	/	44	17
SPB 140-	1	65	140	147	100	/	44	17
SPB 150-	1	80	150	157	106,5	/	44	17
SPB 160-	1	80	160	167	117,5	/	44	17
SPB 180-	2	80	180	187	136,5	120	44	8,5
SPB 190-	2	80	190	197	148	120	44	8,5
SPB 200-	2	80	200	207	156	120	44	8,5
SPB 212-	2	80	212	219	168	120	44	9
SPB 225-	2	80	225	232	183	120	44	9
SPB 250-	2 R	80	250	257	208	120	44	9
SPB 280-	2R	80	280	287	238	120	44	9

## SPB/3

Type	Type	Lock bore	ØP	ØD	Di	Dm	L	R
SPB 120-	1	65	120	127	77	/	63	36
SPB 125-	1	80	125	132	85	/	63	36
SPB 130-	1	65	130	137	86,5	/	63	36
SPB 130-	1	80	130	137	87	/	63	36
SPB 140-	1	80	140	147	98	/	63	36
SPB 150-	1	80	150	157	107	/	63	34
SPB 160-	4	80	160	167	116	/	63	18
SPB 170-	4	80	170	177	128	/	63	18
SPB 170-	1	65	170	177	126,5	/	63	36
SPB 180-	2	80	180	187	137	120	63	18
SPB 180-	1	80	180	187	137	/	63	36
SPB 190-	1	80	190	197	148	120	63	36
SPB 190-	2	80	190	197	147	120	63	18
SPB 200-	2	65	200	207	158	120	63	18
SPB 200-	2	80	200	207	156,5	120	63	18
SPB 212-	2	65	212	219	169	120	63	18
SPB 212-	2	80	212	219	169	120	63	18
SPB 225-	1	80	225	232	183	/	63	36
SPB 225-	2	65	225	232	182	120	63	18
SPB 225-	2	80	225	232	182	120	63	18
SPB 250-	2	80	250	257	208	120	63	18
SPB 280-	2 R	80	280	287	238	120	63	18
SPB 335-	2 R	80	335	342	288	130	63	18

## SPB/4

Type	Type	Lock bore	ØP	ØD	Di	Dm	L	R
SPB 125-	1	80	125	132	83	/	82	55
SPB 130-	1	80	130	137	87	/	82	55
SPB 130-	1	65	130	137	89	/	82	55
SPB 140-	1	80	140	147	97	/	82	55
SPB 140-	4	80	140	147	97	/	82	55
SPB 150-	1	80	150	157	106	/	82	55
SPB 160-	1	80	160	167	117	/	82	55
SPB 160-	4	80	160	167	116,5	/	82	27,5
SPB 170-	1	65	170	177	127	/	82	55
SPB 170-	4	80	170	177	127	/	82	27,5
SPB 180-	2	65	180	187	138	120	82	55
SPB 190-	2	80	190	197	147	120	82	27,5
SPB 190-	1	80	190	197	147	/	82	27
SPB 200-	2	80	200	207	157	120	82	27,5
SPB 212-	1	80	212	219	168,5	/	82	55
SPB 212-	2	80	212	219	168	120	82	28
SPB 225-	2	65	225	232	184	120	82	27,5
SPB 225-	1	80	225	232	181	/	82	55
SPB 225-	2	80	225	232	182	120	82	27,5
SPB 250-	2	80	250	257	206	120	82	27,5
SPB 280-	2	80	280	287	236	120	82	28
SPB 335-	2 R	80	335	342	291	130	82	28

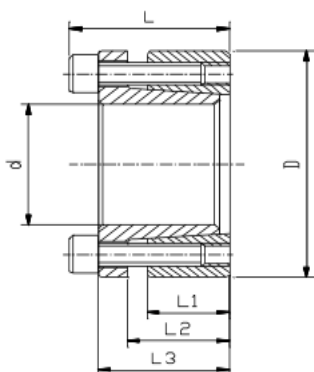
## SPB/5

Type	Type	Lock bore	ØP	ØD	Di	Dm	L	R
SPB 140-	1	80	140	147	97	/	101	74
SPB 150-	1	80	150	157	107	/	101	74
SPB 160-	1	80	160	167	117	/	101	74
SPB 160-	4	80	160	167	117	/	101	37
SPB 180-	1	80	180	187	137	/	101	74
SPB 180-	2	80	180	187	138	115	101	37
SPB 190-	2	80	190	197	147	120	101	37
SPB 200-	1	80	200	207	157	/	101	74
SPB 200-	2	80	200	207	159	120	101	37
SPB 212-	1	80	212	219	169	/	101	74
SPB 212-	2	80	212	219	169	120	101	37
SPB 225-	2	80	225	232	181	120	101	37
SPB 225-	1	80	225	232	181	/	101	74
SPB 250-	2	80	250	257	207	130	101	37
SPB 280-	2 R	80	280	287	238	130	101	37
SPB 315-	2 R	80	315	322	273	130	101	37

## SPB/6

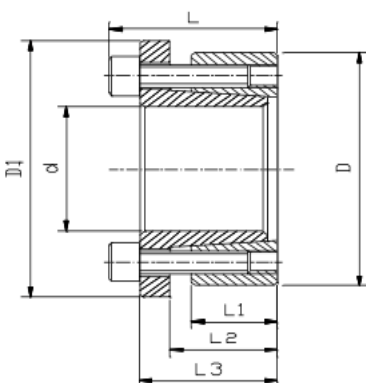
Type	Type	Lock bore	ØP	ØD	Di	Dm	L	R
SPB 140-	1	80	140	147	97	/	120	93
SPB 160-	4	80	160	167	116	/	120	46,5
SPB 160-	1	80	160	167	118	/	120	93
SPB 180-	2	80	180	187	137	120	120	46,5
SPB 200-	2	80	200	207	158	120	120	46,5
SPB 200-	1	80	200	207	156,5	/	120	93
SPB 212-	2	80	212	219	168	120	120	46,5
SPB 225-	2	80	225	232	182	120	120	47
SPB 250-	2	80	250	257	207	130	120	47
SPB 280-	2	80	280	287	236	130	120	47

## CALETTATORI PI CAL LOCKING DEVICE PI CAL



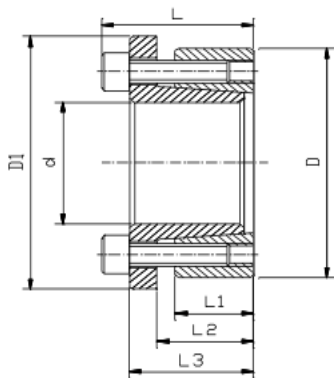
**SIZE:PI CAL-13**

dimensioni dimensions							trasmissione transmission		forza di contatto contact pressure		viti di serraggio Din912-12.9 locking screws Din912-12.9		
d	D	L1	L2	L3		L	forza assiale axial force	coppia torque	albero shaft	mozzo hub	q.tà qty	misura size	coppia chiusura tightening torque
mm	mm	mm	mm	mm		mm	Ft	Mt	P	P1			Ts
							KN	Nm	N/mm2	N/mm2			Nm
22	47	17	22	28		34	29	316	227	106	5	M6x20	13
30	55	17	22	28		34	34	517	199	109	6	M6x20	13



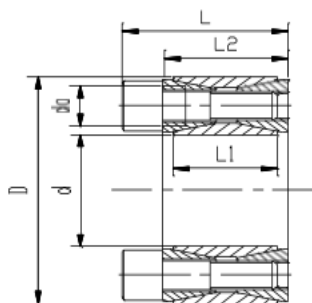
**SIZE: PI CAL-15**

dimensioni dimensions							trasmissione transmission		forza di contatto contact pressure		viti di serraggio Din912-12.9 locking screws Din912-12.9		
d	D	D1	L1	L2	L3	L	forza assiale axial force	coppia torque	albero shaft	mozzo hub	q.tà qty	misura size	coppia chiusura tightening torque
mm	mm	mm	mm	mm	mm	mm	Ft	Mt	P	P1			Ts
							KN	Nm	N/mm2	N/mm2			Nm
25	55	62	17	22	31	39	34	428	238	108	4	m8x25	41
30	65	72	17	22	31	39	43	642	247	114	5	m8x25	41
35	65	72	17	22	31	39	43	748	212	114	5	m8x25	41
40	65	72	17	22	31	39	43	855	185	114	5	m8x25	41
30	80	87	20	25	33	41	60	899	295	110	7	m8x25	41
33	80	87	20	25	33	41	60	959	276	110	7	m8x25	41
35	80	87	20	25	33	41	60	1049	253	110	7	m8x25	41
40	80	87	20	25	33	41	60	1199	221	108	7	m8x25	41
45	80	87	20	25	33	41	60	1349	196	110	7	m8x25	41
50	80	87	20	25	33	41	60	1499	177	110	7	m8x25	41



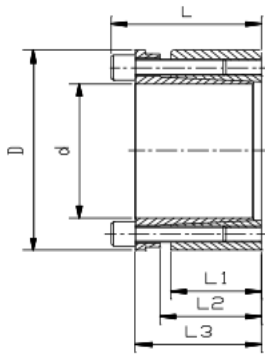
**SIZE: PI CAL-16**

dimensioni dimensions							trasmissione transmission		forza di contatto contact pressure		viti di serraggio Din912-12.9 locking screws Din912-12.9		
							forza assiale axial force	coppia torque	albero shaft	mozzo hub	q.tà qty	misura size	coppia chiusura tightening torque
d	D	D1	L1	L2	L3	L	Ft	Mt	P	P1			Ts
mm	mm	mm	mm	mm	mm	mm	KN	Nm	N/mm2	N/mm2			Nm
25	50	59	17	22	28	34	29	356	198	99	6	m6x20	17



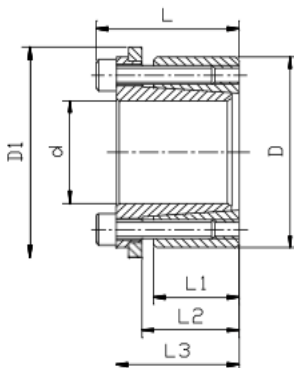
**SIZE:PI CAL-40**

dimensioni dimensions					trasmissione transmission		forza di contatto contact pressure		viti di serraggio Din912-12.9 locking screws Din912-12.9		
					forza assiale axial force	coppia torque	albero shaft	mozzo hub	q.tà qty	misura size	coppia chiusura tightening torque
Φd	ΦD	L1	L2	L	Ft	Mt	P	P1			Ts
mm	mm	mm	mm	mm	KN	Nm	N/mm2	N/mm2			Nm
30	55	17	20	26	33.5	450	190	103	10	m6x18	14.9
40	65	17	20	26	46.9	938	200	122	14	m6x18	14.9
45	75	20	24	32	73.2	1647	208	125	12	m8x22	35
55	85	20	24	32	85.4	2348	200	130	14	m8x22	35



**SIZE:PI CAL-70**

dimensioni dimensions						trasmissione transmission		forza di contatto contact pressure		viti di serraggio Din912-12.9 locking screws Din912-12.9		
						forza assiale axial force	coppia torque	albero shaft	mozzo hub	q.tà qty	misura size	coppia chiusura tightening torque
Φd	ΦD	L1	L2	L3	L	Ft	Mt	P	P1			Ts
mm	mm	mm	mm	mm	mm	KN	Nm	N/mm2	N/mm2			Nm
35	60	26	31	39	45	65	1130	209	122	8	m6x25	17
40	65	26	31	39	45	65	1292	183	113	8	m6x25	17



**SIZE:PI CAL-71**

dimensioni dimensions							trasmissione transmission		forza di contatto contact pressure		viti di serraggio Din912-12.9 locking screws Din912-12.9		
							forza assiale axial force	coppia torque	albero shaft	mozzo hub	q.tà qty	misura size	coppia chiusura tightening torque
d	D	D1	L1	L2	L3	L	Ft	Mt	P	P1			Ts
mm	mm	mm	mm	mm	mm	mm	KN	Nm	N/mm2	N/mm2			Nm
40	65	71	26	31	39	45	40	793	112	69	8	m6x20	17